

LT-100

Thermocouple Reference Meter



Standard Features

- Compatible With All Thermocouple Types
- Easy To Use Full Range Display
- RS-232 Interface With Fast Updating
- Selectable Resolution
- Internal/External Cold Junction Function
- High Accuracy
- 1-Year Warranty



LT-100

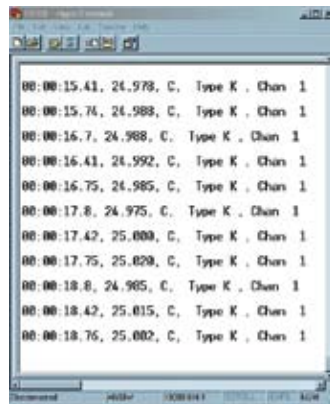
Thermocouple Reference Meter



LT-100

EDL's revamped, 2-channel LT-100 Thermocouple Reference Meter, was re-designed to be hand-held and totally user friendly. This unit provides the most accurate high precision temperature measurements available in its class. The LT-100 uses a 24 bit A/D and a microprocessor for high precision temperature measurements and conversions. EDL's new thermocouple reference meter incorporates features previously found in much higher priced bench or rack mounted instruments but all at affordable EDL prices...backed by the trusted EDL name.

A precision cold end reference junction was incorporated into the design to accurately compensate for changes in ambient temperature and to keep the instrument functioning at its highest accuracy at all times. When utmost accuracy is required, the internal electronic cold end reference can be set to external, for use with an ice bath giving you enhanced stability. Fast and easy data transmission is easily accomplished through the use of the RS-232 interface. Transmission of temperature readings is provided with a time stamp and thermocouple type. EDL's LT-100 uses a 9V battery and a simple wall adapter for long term measurements. A single 9V battery will power the instrument for over 50 hours.



Fast & Easy Data Transmission

RS-232 transmission of temperature readings is provided with a time stamp and thermocouple type. Connection is made through Microsoft Windows standard communication software "Hyper Terminal", or suitable RS-232 communication software, and a standard PC serial port. USB/Serial port adapters are available for PCs without a standard serial port for \$19.95.

Your Electronic Development Labs, Inc. distributor is:

Standard Features

- Works With All Thermocouple Types
- Easy To Use Full Range Display
- RS-232 Interface With Fast Updating
- Selectable Resolution
- Internal/External Cold Junction Function
- High Accuracy
- Auto Calibration
- Custom Linearization Available
- Reads In K, °C, °F, or mV
- 24 Bit A/D
- 2 Channels
- 1-Year Warranty

Specifications

Part #	LT-100
Thermocouple Types	K, J, E, T, R, S, B, N, and C
Range Of Display	Full Range Each TC
Size	11.2 cm x 19.1 cm x 3.2 cm (4.4" x 7.5" x 1.25")
Weight	340 g (12 oz.)
Accuracy	± 0.1 °C
Resolution	User Selectable 1, 0.1, 0.01
A/D	24 Bit Resolution
Backlighting	LED Panel
Readout	mV, K, °C, °F
Power	9Vdc Battery & AC Adapter
Update	3 HZ
Operation	0 ° to 50 °C
Battery Life	50 Hours Continuous Operation (No Backlighting)
Input - 2 Channels	Uncompensated Mini TC Jacks
2 Channels	Minimum, Maximum, & Difference
Interface	RS-232
Character Height	1/2"



The Temperature People® Since 1943

Electronic Development Labs, Inc.
244 Oakland Drive • Danville, VA 24540 • USA
P: 434.799.0807 • F: 434.799.0847 • 1.800.342.5335
www.edl-inc.com • email: sales@edl-inc.com